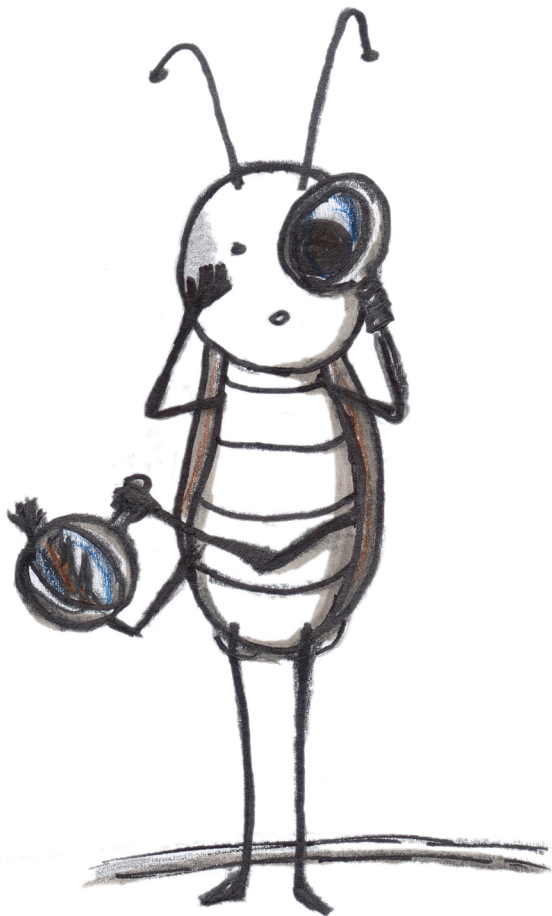


MAXIMIZE



MAXIMIZE

Find a more serious problem underlying the one initially found.

Here are four types of follow-up testing focused on severity:

- Vary your behavior—change what you do as you test
 - What happens if you do *this* instead of *that*?
 - Repeat the test many times
 - Change something related to the sequence of tasks in the test
 - Change values of variables in the test or combine them with other variables' values
 - Change something related to the failure (tasks, sequence, data)
- Vary the options and settings of the program – change settings of the application under test,
- Vary data that you load into the program – different startup files or other data not directly involved in the test
- Vary the software and hardware environment.– e.g. operating system, peripherals, external software that interacts with this application

Maximize is one of the steps presented in RIMGENT, a bug investigation framework taught in the BBST Bug Advocacy course.

<https://bbst.courses/>